

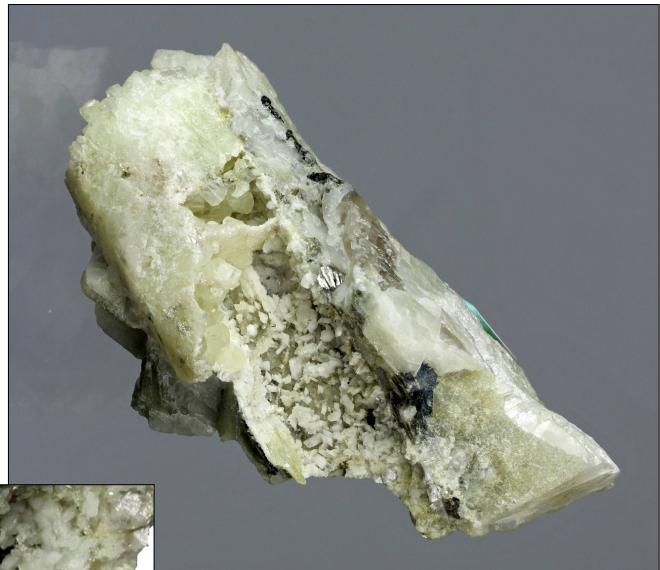
Keiviite-(Y)

Ivedal feldspar quarry,
Ivedal, Iveland.
Mined and collected by Orest
Landsverk mid 1970s.
We bought this specimen
from Landsverk on
2. June 1982.
15.5 cm across.
The white mineral is Yttrialite.



Laumontite

Synken quarry, Knipan, Iveland.
Mined by Aslak Nygård summer 1982. Collected on
5. August 1982.
Photographed area 5 x 4 cm. The specimen measures
10 x 7,5 cm.



Milarite and Bertrandite

Bratteklev feldspar quarry, Evje.
Mined by Arild Omestad, and
"Kilefjorden" in summer 2000.
We bought this specimen from Omestad
on 20. July 2002. That summer he had a
sales booth at the Jokeli quarry,
Landsverk, Evje. The specimen
measures 2.5 cm across.
The crystals are appr. 3 mm long.



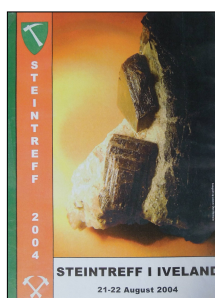
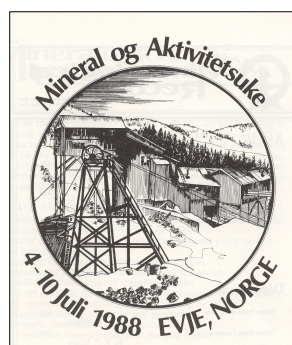
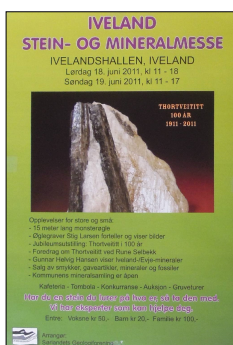
Monazite-(Ce)

The Beryl quarry, Unneland, Evje og Hornnes. Intergrown crystals. Collected by Øyvind Larsen and Svein Arne Berge on 8. June 1976 on the dumps. We bought this from S. A. Berge on 6. May 1984, when he realized parts of his mineral collection. The group is 10.5 cm tall.



Monazite-(Ce)

Rightt: At Dukane, Dalane, Iveland. Mined by the brothers Trygve, Tellef and Syvert Dalane before WW II. Collected 1. September 1970 on the dumps. This is one of the few specimens we have collected ourselves and one of the better and interesting specimens. The two Monazite-(Ce) crystals and the smaller crystal of Gadolinite-(Y) sit on the bottom side of a spessartine garnet, 5 cm across. The top side are fully terminated. Identified by Ole F. Frigstad at NHM, Oslo January 1971. The largest crystal is 2.6 cm long. (Photo: G.H.H.)



Both in Evje and in Iveland, mineral shows have been arranged from time to time since 1979. The shows in Iveland were arranged by Sørlandet's Geological Society, while in Evje by the private companies Oddestemmen Steinstryperi and Mineralparken.



Muscovite

Høyland feldspar quarry, Frigstad, Iveland.

Mined by the brothers Øystein and Arild Omestad 1968. Sold to Søren Østerhus the same year. Acquired by exchange with Østerhus on 20. July 1975. Many hours were spent to remove the quartz to uncover the crystals. Though a most common mineral, this was one of our most appreciated specimen from our Iveland/Evje collection. 25 x 20 cm. (Photo: G.H.H.)



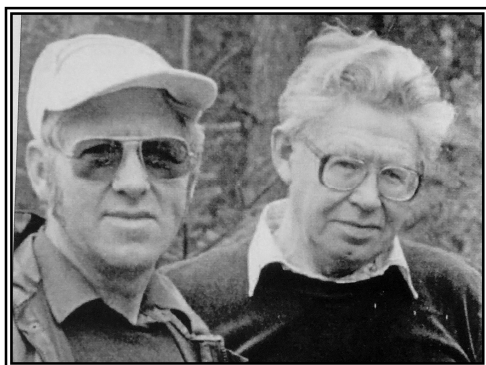
Oxycalciopyrochlore

Håland feldspar quarry,
Ljoslandsåsen, Iveland.
Collected by Orest Landsverk,
around 1970.
Crystals to 1 cm diameter in
feldspar with allanite-(Ce) and mica.



Oxycalciopyrochlore

Heia feldspar quarry, Håverstad, Iveland.
With feldspar and black euxenite-(Y).
Mined by Ivar and Åsvald Åsen
between 1955 and 1960. The specimen was
presented us on 20. July 1971.
together with some other minerals
that Ivar Åsen kept in a little box. Among the
minerals were also the specimen of anatase.
Identification of both specimens by Ole F
Frigstad (MNH, Oslo) in July 1970.
The specimen has been reidentified according
to the new nomenclature by Mr Vladimir
Karpenkov at Fersman Museum's Laboratory
in Moscow in January 2016 and hereby got its
new name. 9 cm across.



Åsvald (1931-2008) (left) and Ivar ÅSEN (1926-2001)

Brothers born in Iveland. Worked for many years in different
quarries in Iveland. From 1963 Åsvald managed his petrol
station at Skaiå and had himself a small mineral collection.
(Photo from Iveland Bygdebok- Volum V)

Setesdal Mineralpark - Mineralmesse 8 og 9 juli

Vi inviterer alle steininteresserte fra hele landet til å delta på Mineralmessen. Har du
noe å selge eller vise fram til likesinnede, tar du med utstillingsbord og vi finner en
grei plass til deg. Ingen standleie men bindene påmelding. Lørdag har vi også
rallarfestival, søndag har vi hagedager. Tilsammen blir det en interessant
mineralmesse med god underholdning i fine omgivelser. De som har campingvogn er
velkommen til å overnatte i Parken. Ellers vil vi kose oss en lørdag kveld. Vennligst
send påmelding snarest. Setesdal Mineral Park, Postboks 4073 Kongsgård, 4602
Kristiansand. Tlf. 381 98533 Fax 381 99010

Mineral shows also took place at
Setesdal Mineral Park in Hornnes
in the mids of 1990s.
Advertisement in NAGS-
magazine 1995/3.

“Polycrase-(Y)”

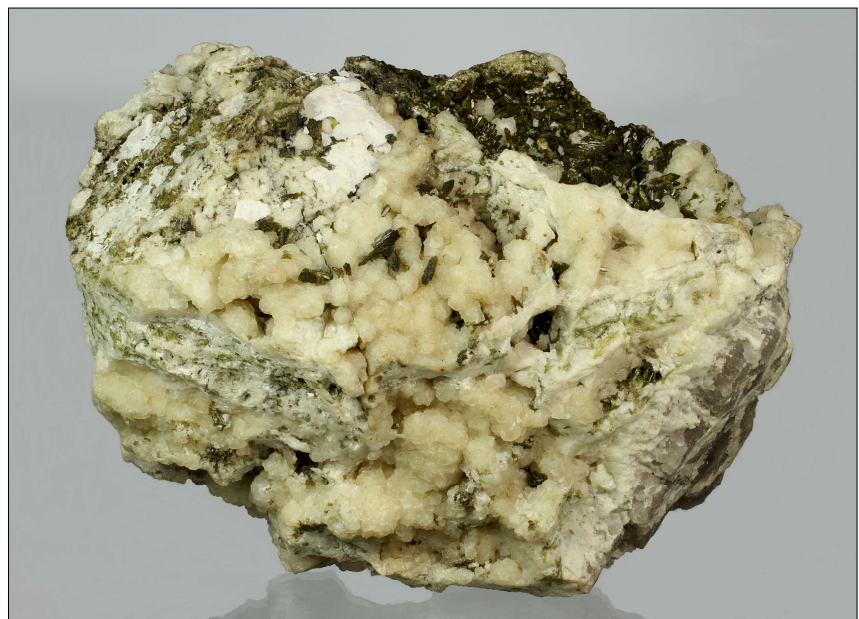
Håland feldspar quarry,
Ljoslandsåsen, Iveland. Håverstad,
Iveland. Mined by Aslak Nygård
during the 1950s and 1960s.
Collected by Steinar Solli roadside at
the Håverstad Estate in August 1969.
We bought the specimen from Solli
on 19. December 1977. 15 x 14 cm.
The mineral was discredited by IMA
in June 2022. It is now identical with
euxenite-(Y)



Steinar Solli at the roadside at Håversted
Estate in 1969. Here he managed to collect several
nice specimens of euxenite-(Y), ((polycrase-(Y)),
samarskite-(Y) and columbite-(Fe).
(Photo: Familay Solli)

Prehnite

Synken feldspar quarry,
Knipan, Iveland.
With some calcite and epidote
crystals. Collected by Orest
Landsverk summer 1979.
After many years we managed to
buy this specimen from Landsverk on
12. October 1982. 15.5 cm across.



Quartz

Quartz and feldspars are the most common mineral from the pegmatites. However, fine crystals are rare and found only at very few localities. Beautiful, yellow crystals to 15 cm in length were mined by Theodor Gautestad at Landsverk, Evje. The crystal quarry at Birkeland, Iveland is famous for its smoky crystals to nearly a meter in length with weights to 30-40 kilogrammes. Lots of crystals have been collected from the Jokeli quarry, but too often covered by chlorite (see below). Some smaller amethyst crystals haven been collected from the dumps of the Hålands quarry in Iveland. The following specimens and stones we have had in our collection.

Crystal feldspar quarry, Landsverk, Evje og Hornes.
Mined by Theodor Gautestad around 1966-67. Gautestad gave at that time rough quartz material for cutting to goldsmith Karl Lauvland in Kristiansand, who sent the material to company Max Davis Stones Ltd. London for facetting. We bought the stone from Lauvland on 20. Desember 1972. The facettted stone measures 22 x 18 mm.
(Photo: G.H.H.)



Jokeli feldspar quarry, Landsverk, Evje.
Mined by Theodor Gautested, Evje
around 1966. Sold to Steinar Solli in summer 1968. We bought this specimen from Solli on 2. May 1970.
33 x 27 cm. (Photo: G.H.H.)



Magnus Nateland worked in this quarry in 1947. At that time quartz did not sell, so most of these crystals were thrown on the dumps. It is estimated that the cavity contained about seven hundred crystals and crystallized specimens. During the summer 1967, Torje Gjerustad, Vennesla, worked through the dumps and collected about 150 specimens, of which the above was the biggest he found.

I asked Orest Landsverk if he knew someone who could have such a crystal, the same type and size as the one Theodor Gautestad had in his shop in Evje. He said me that he would call one person. After a day or two, Landsverk called me and we visited Gjerustad the upcoming Saturday, 27. April 1986. We managed to buy this crystal, along with another one (see next page). Gjerustad had all the minerals on the floor of his garage. The crystal is 50 cm long.



These two stones are faceted from a rough 12-kilos crystal from the Crystal quarry, Birkeland in Iveland, which we bought from Torje Jerustad together with the big quartz crystal (page 22). Mr. Ole F. Frigstad and Mr. Arnar Hanson brought it to The Munich Mineral Show and handed it over to Mr. Rudi Cullman at company Die Rohsteinsquelle from Idar-Oberstein. He passed it on to company Gordner & May in Hettenrod at Idar-Oberstein, where they faceted them by free hand during October - November 1987. The stone left measures 6.3 x 4.6 cm and the one right 7.7 x 5.5 cm. In this way they are presented at the mineral exhibition at Åkle. (Photo: G.H.H.)

Eptevann, Birkeland, Iveland.
Mined by Olav P. Tveit July 1985.
We bought it from Tveit on 21. July 1988.
15.5 cm long.

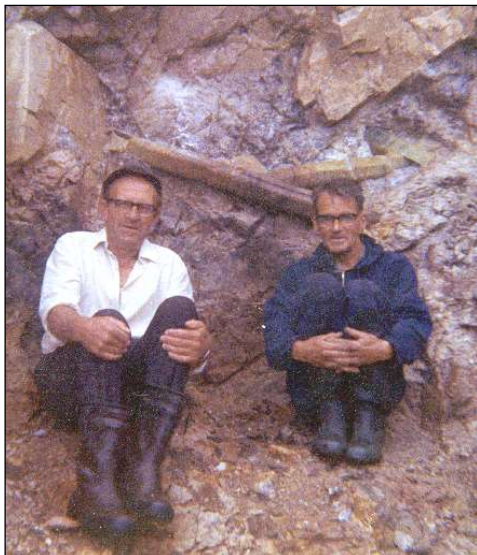


Håland quarry, Ljoslandsåsen, Iveland.
The 5.5 cm long "phantom" crystal
attached to albite crystals was
collected by Orest Landsverk in the
early 1970s. We bought this specimen
from Landsverk on 9. October 1984.

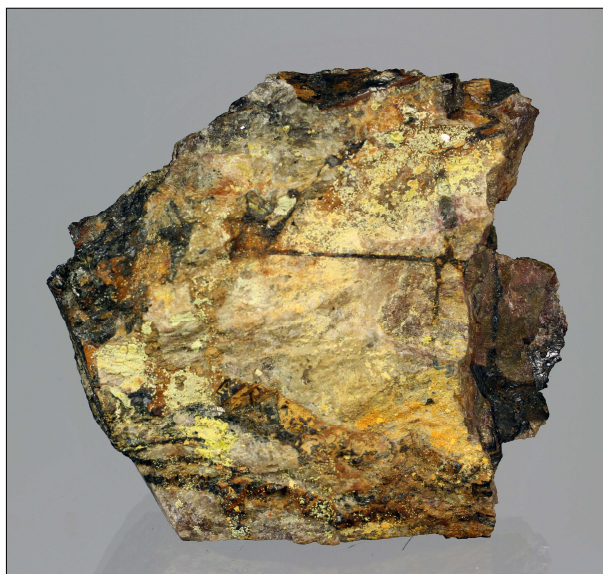


Samarskite-(Y)

Håland feldspar quarry, Håverstad, Iveland.
Mined by Aslak Nygård. With dull columbite-(Fe) in feldspar
matrix. Collected by Steinar Solli at the roadside in August
1969 at the Håverstad Estate from dump material transported
by Hans O. Nygård from the Håland quarry. Collected together
with the (polycrase-(Y)) (page 29) We bought the specimen
from Solli on 19. December 1977. 11 x 11 cm.



Bjarne Engestøl (left) and Orest Landsverk in Kongsberg feldspar quarry at Knipan in Iveland in May 1974 before the large beryl crystals were mined. (Photo G.H.H.)



Schoepite

Ås feldspar quarry, Evje.
 Microcrystals on feldspar.
 Collected by Odd S. H. Hansen
 Evje. summer 1985. We exchanged this
 specimen from Hansen on 10. July 1972.
 6 x 7 cm.
 This was the first find of schoepite
 from the pegmatites in Evje-Iveland



Odd S. H. HANSEN „Majoren“

Born in 1922 in Jevnaker. From 1965 he served as an officer at The Evjemoen military camp in Evje. Here, he visited Thodor Gautestad's mineral shop and got devoted to minerals. He collected minerals systematically, both local and also some foreign specimen. Many times we visited Mr. Hansen and discussed minerals and mineralogy with coffee and lots of sandwiches. Among collectors Hansen is known as The Major, due to his military title. He was a perfectionist, everything must be correct, and lots of specimens he sent to Oslo for a correct identification. The mineral Schoepite he discovered as new to the mineralogy of Evje/Iveland. He spent endless hours to search for uranium secondaries in a lots of pegmatites in Evje, with great success. Evje og Hornnes municipality bought his collection and it is now on display at the Fennefoss Museum in Evje and contains several local rare species of high quality, especially from the Einerkilen uranium quarry. Some of these specimens are photoed in our book: "The Minerals of Evje-Iveland". Hansen died 1997. (Photo: Fennefoss Museum)



Spessartine (faceted)

Birkeland, Iveland. Stone right:
 11 mm in diameter. Bought from Steinar Solli on
 15. Desember 1986.
 Stone left: Bought from co. Thulitten Stenus in
 September 1983. Both stones are faceted by Ivar
 Gautestad. 19 mm across. (Photos: G.H.H.).

Two single crystals from
 Rossås, Iveland.
 Collected by Arthur
 Landsverk in the mid 1970s.
 We exchanged/bought the
 crystals from Landsverk in
 June 1977. The crystal left is
 4.5 cm in diameter and the
 right one 4 cm.



Stilbite-Ca

Jokeli feldspar quarry, Landsverk, Evje. Mined by Theodor Gautestad 21. June 1981. Bought from Gautestad next day on 22. June. The calcite (page17) and the Stilpnomelane (below) are also from the same pocket. Identified by Alf Olav Larsen June 2000. Larsen also identified the white and the yellow colored stilbites, together with two different colored chabazite. The zeolites are all Ca-dominant. 15.5 cm long.



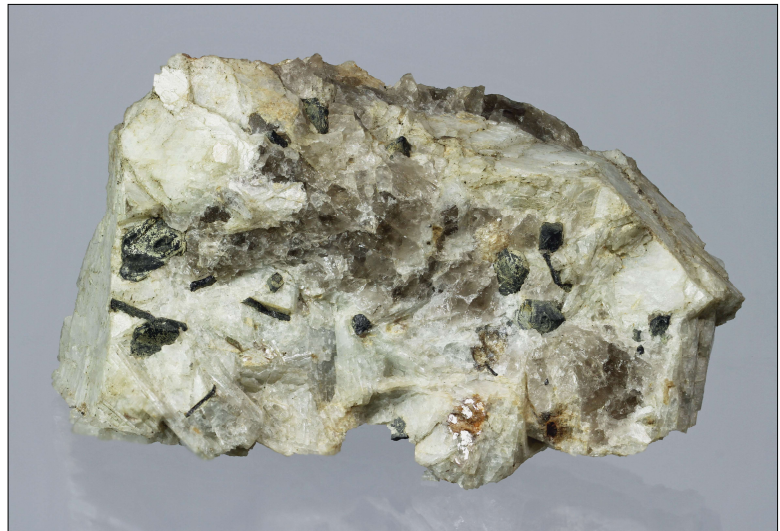
Stilpnomelane

Jokeli feldspar quarry, Landsverk, Evje. Mined and collected by Theodor Gautestad 21. June 1981. We bought it from Gautestad on 11. September 1981. 12.5 cm long.



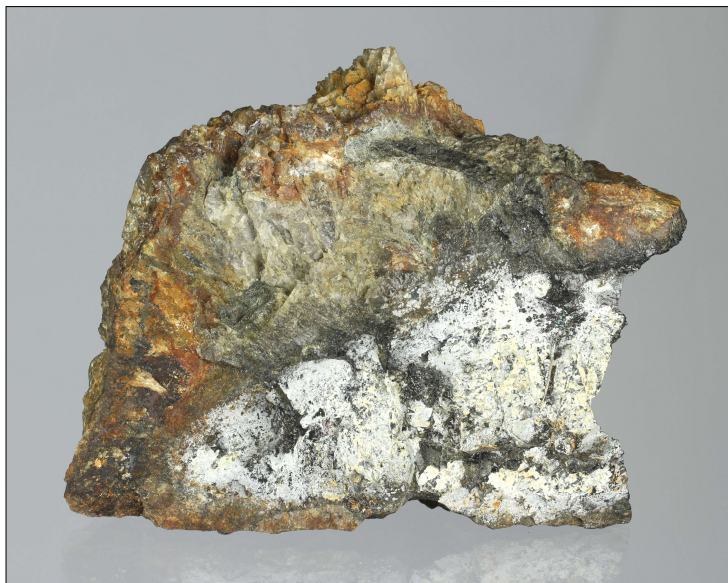
Tantalite-(Mn)

At Beinmyr, Støledalen, Iveland. Crystals in pegmatite matrix. Identified by Thomas Husdal June 2009. Collected on 22. September 1973. 7 cm across.



Tengerite

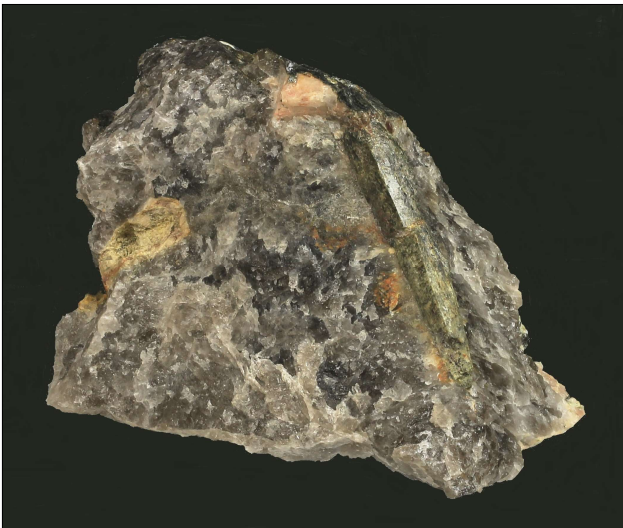
Feitedalen, Ivedal, Iveland. White microcrystals on gadolinite-(Y). Mined by Anders Omdal in spring 1974. Gift from Omdal on 20. July 1974. 9 x 7 cm. Tengerite is usually intimately intergrown with lokkaite.





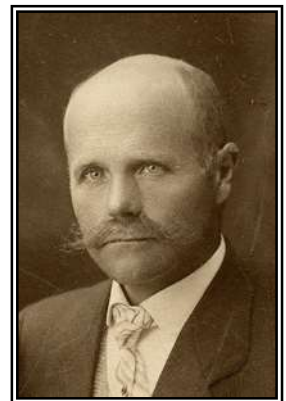
Thorite

Frigstad, Iveland.
Collected by Orest Landsverk
In the mid 1960s.
Dark brown masses with grey
columbite-(Fe).
We visited Landsverk on 1. May
1985 at Solstad in Iveland, as he
suddenly handed us this specimen.
"I have had it for many years in
a box under my bed."
14.5 x 10 cm.



Thortveitite

Knipan, Ljoslandsåsen, Iveland.
Mined by Bjarne Engestøl in late
autumn 1972. We bought this and
another smaller specimen (which
we exchanged with Gustav Høynes
for the Columbite-(Fe) specimen
(page 19) on 12. Desember 1972.
The crystal is 6 cm long.



Thortveitite was named in honor of Olaus G. Thortveit (1872-1917) from Iveland. So far, the one and only person given name to a mineral originally found in the Evje-Iveland region. Mr. Thortveit also bought and sold minerals to collectors and museums, as well as to the industry. (Photo: Family Gunnar Nodeland)



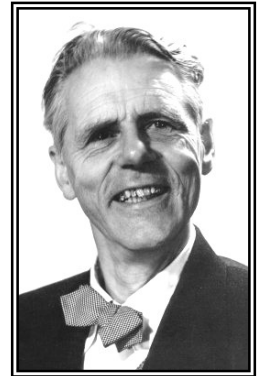
Titanite

Synken feldspar quarry,
Knipan, Iveland.
Mined by Aslak Nygård 1982-83.
Collected on 18. August 1985.
The crystal is reset.
Specimen is 11 cm across.
(Photo: G.H.H.)



“Tombarthite-(Y)”

Høgetveit feldspar quarry, Høgetveit, Evje.
Black masses in microcline on mica.
Collected by Orest Landsverk August 1984.
Landsverk spent much time searching for tombarthite in the dumps at Høgetveit.
We bought the specimen from Landsverk on 1. September 1984. 14.5 cm across.



Tombarthite was described as a new mineral in 1968 from the Høgetveit feldspar quarry in Evje by Henrich Neumann og Borghild Nilssen. It was the second mineral specie originally described from the Iveland-Evje area. Named in honor of geologist Tom F. W. Barth (1899-1971) (Photo: Fennefoss museum) The mineral was discredited as a valid specie in 2016. (See Henrik Friis' paper in the publication of the Norwegian Mineral Symposium 2016).

Topaz

Tunnelen feldspar quarry,
Birkeland, Iveland.
Mined by Magnus Nateland.
His daughter Jenny Thorsen
inherited a few mineral specimens.
We bought this from Mrs. Thorsen
on 20. August 1972. 17 cm tall.



Tveitite-(Y)

Tunnelen feldspar quarry, Birkeland, Iveland.
Mined before 1960 by Tormod Frigstad.
Collected on the dumps by Orest Landsverk in August 1985.
We bought the specimen from Landsverk on 15.
November 1985. This is the largest piece found so far in Iveland.
Landsverk was certain that he had observed this mineral already back in the early 1970s.
He thought than it was bad quality topaz. 3.5 x 2.5 cm.



Uraninite

Dalene feldspar quarry, at Dukane, Dalane, Iveland.

Crystal in feldspar on mica.

Mined by Syvert, Trygve and Tellef Dalane before WW II.

We collected this specimen on the dumps on 10. September 1984. The crystal measures 12 mm on edges.



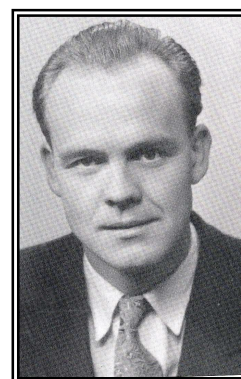
Xenotime-(Y)

Tunnelen feldspar quarry, Hilltveit, Iveland.

Crystals in feldspar on mica.

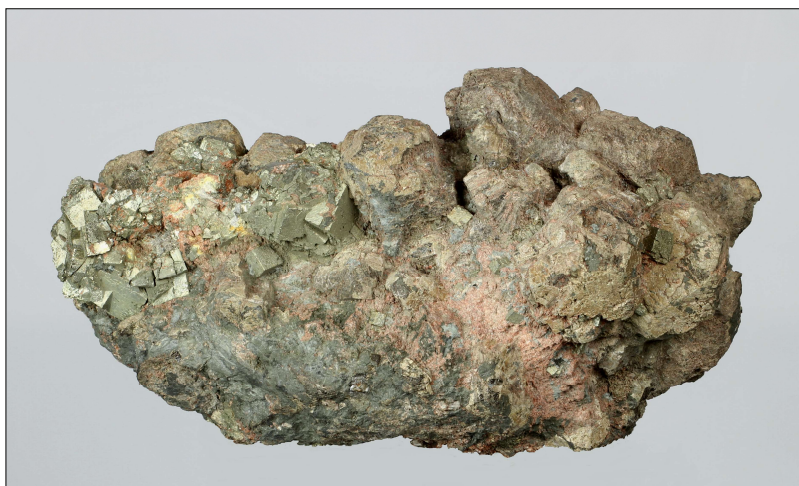
Together with Salve Budalshei we mined this and several more fine specimens of xenotime-(Y) on 17. July 1974 from the ceiling of the quarry.

14.5 cm across.



Salve BUDALSHEI

Born in 1931 at Budalshei in Iveland and lived all his life in Iveland. For many years he worked in several feldspar quarries in Iveland. He was interested in minerals and collected some very nice specimens. Worked in the pegmatite quarries in Feitedalen, where he collected a nice specimen of gadolinite-(Ce), which is on exhibition in The Mineral Park in Evje and Hornnes. This specimen was prior in the collection of Arthur Landsverk. Another very nice specimen he collected was an Ilmenite crystal which can be seen in the collection of Iveland municipality. In the summer of 1974 we mined some beautiful specimens of large xenotime-(Y) crystals (look above) at Hilltveit. Salve Budalshei died in 1998. (Photo: Iveland bygdebok V)



Zircon

Jokeli feldspar quarry, Landsverk, Evje.

Mined by Theodor Gautestad in summer 1970. We acquired this specimen, partly by exchange in other minerals and partly by payment, from Gautestad on 30. July 1972. This was the first of many fine mineral specimens we bought from Theodor Gautestad. 10 cm across.

Zoisite

Synken quarry, Knipan, Iveland.
Crystals in feldspar. Mined by Aslak
Nygård summer 1982. We collected
this specimen on 6. June 1985.
The largest crystals are 1 cm of
length. 10.5 cm across.



Jokeli feldspar quarry at Landsverk in Evje.
The quarry has produced many wonderful
mineral specimens. It is now closed for col-
lectors and visitors have to dig in the dumps.
(Photo: G.H.H.)
Unfortunately, there is little or nothing for a
mineral collector to find, as all nice mineral
specimens are collected immediately after
each blasting.



Synken quarry, Knipan, Iveland.
For 3 years Arild Omestad
mined out a lot of fine mineral from
this quarry. You see him near the bottom
in summer 2018.
From this quarry a lot of different species
are found. as rutile, pyrite, albite, fluorapatite,
prehnite, zoisite, epidote, laumontite, to
mention some. (Photo: G.H.H.)

